

# NEWS FROM PORT PIPAVAV

CUSTOMER NEWSLETTER | DECEMBER 2023 | ISSUE 23



## MD's message



Dear Customers,

Thank you for your support through 2023. This was a challenging year, but we focused on understanding your expectations and investing in infrastructure upgrades, technology solutions, and improving our operational efficiency. Let us take you through some of the milestones we were able to achieve this year with your patronage, and looking forward to many more vibrant associations in the coming year.

Wishing you and your family a safe, healthy and prosperous 2024!

– Girish Aggarwal

## 1000<sup>th</sup> LPG rake safely and efficiently loaded

APM Terminals Pipavav crossed a milestone of loading the 1000<sup>th</sup> LPG rake in November. We are one of the few ports in India to have an LPG rail siding that accommodates a whole rake at a time.

### MILESTONES ACHIEVED IN 2023

#### OPERATIONAL PRODUCTIVITY:

- Facilitated country's first dedicated BLSS 48-wagon rake
- Handled the highest-ever outward and inward double-stack trains in a month
- Handled the highest ever yearly liquid volumes (LPG + non LPG) at the port
- Crossed 200 Port Moves Per Hour on MOL Endowment
- Saved an average of 45.83 minutes for each vessel
- Enabled almost 1,045 hours of early sailing for shipping lines
- Handled highest parcel size: 5,530 TEUs on MOL Contribution
- Clean RoRo movement of passenger cars (Gurgaon-Pipavav by NMG rake)

#### INFRASTRUCTURE & SERVICES:

- Planned investment for a new liquid berth
- First warehouse at MMLP inaugurated
- Commenced VLGC operations
- New services- Colombo Cochin Gulf, China India Express, and NPI call by Ocean Network Express

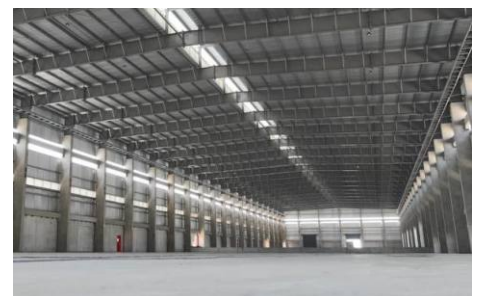
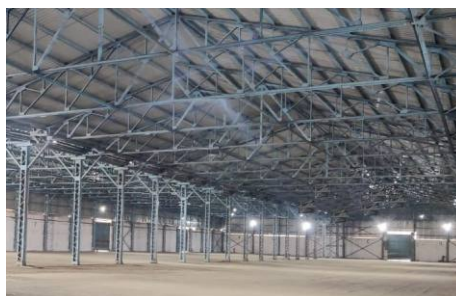
#### SUSTAINABLE OPERATIONS:

- Agreement with Cleanmax for renewable power
- 47% of energy used derived from green sources
- Yearly 6,600 tons of carbon emission reduction

## State-of-the-art warehousing for various commodities and industries

APM Terminals Pipavav offers warehousing solutions with around 1.8 million square feet of warehousing infrastructure within its control, and additional 5,00,000 sq feet through some of its logistics partners.

- safe flooring
- good illumination
- rain/weather-proof
- fire safety
- pest controlled
- CCTV surveillance



The warehouse is ideal for transit and long-term secure storage solutions for various commodities across industries like e-commerce, FMCG, agriculture, fertilizers, paper, infrastructure, pharma, seafood etc.

## Lifting the standard of customer connectivity with our API offering

APM Terminals Pipavav now offers you real-time data connectivity to Application Programming Interfaces (APIs) which enable you to track the schedules and key milestones for all vessels calling at our terminal.

We support you with data for Vessel Schedules, Import Containers, Container Event History and Empty Container Returns.

With our APIs you are able to pull real-time data from our Terminal Operating Systems, into your own internal systems, such as a Logistics or Transport Management System (TMS). Developed in line with industry standards, the API offers self-service, straight forward, one-time-only implementation. We'll maintain and manage our

APIs, so once you've set them up, you can be confident that you'll continue to reap the benefits, including:

- **Increased accuracy:** container data is transferred automatically removing the chance of human error or reliance on outdated information
- **Time saving and cost effective:** enables large volumes of data to be handled with no manual intervention
- **Improved planning:** guarantees you're using the most up-to-date information available in the supply chain



Vessel Schedule



Import Availability



Container Event History



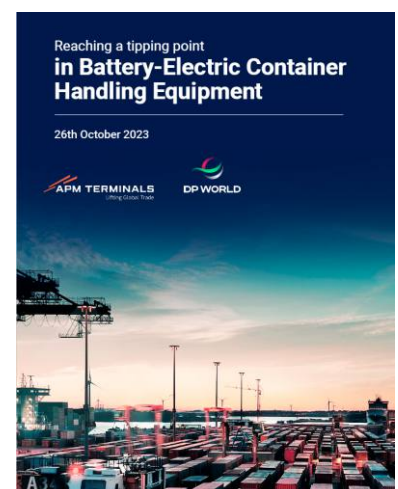
Empty Container Returns

## Leading the way in decarbonising operations of terminals around the world

APM Terminals along with DP World, a global leader in logistics management services, announced an initiative to accelerate decarbonisation of the world's terminals. They provided a clear roadmap for industry stakeholders for electrifying port operations within 2-8 years, through conclusive research into battery-electric container handling equipment (CHE).

CHE is a critical enabler of port operations and is used to move containers on and off ships across the world. Replacing diesel CHE with battery-electric CHE is a key step in achieving the goal provided action is taken now. It is a realistic, achievable and affordable way to dramatically reduce carbon emissions. This roadmap is the first step towards mobilising industry partners to reach net-zero greenhouse gas emissions in the industry.

APM Terminals and DP World encourage industry peers to review the research and support its goals. As a next step, the partners are preparing to mobilise industry-wide collaboration around zero-emission port operations.



Industry [White Paper](#) capturing the findings of a research, and CHE electrification roadmap

## Commencing VLGC operations, building a strategic gateway for LPG imports

APM Terminals Pipavav commenced operations of Very Large Gas Carrier (VLGC) with the maiden berthing of MT Jag Viraat, owned by Great Eastern Shipping company. With a major shift in All-India LPG imports to VLGC vessels, our VLGC handling capability will allow oil marketing companies to maximize their LPG imports efficiently and safely.

The introduction of the VLGC compliant berth facility will help bringing in large vessels with larger parcel size to get economy of scales. Besides, our port's DFC compliant LPG rakes help in distributing LPG cargo to the remote hinterland safely via environment friendly train connectivity. Also, the development of a dedicated VLGC compliant LPG Berth is underway along with the expansion of our LPG Terminal capacity.



## Shortening the port-to-depot time cycle for containers

Rail transport of containers cuts down delivery time. Pipavav offers excellent rail connectivity with direct access to Dedicated Freight Corridor and facilitates both, single and double-stack train runs.

While double-stack ensures that more customers are able to transport their containers in each train run, we also look at maximizing the number of trains runs we are able to facilitate to minimise the port-to-depot waiting time for containers.

In July this year,  
we broke all records:

Maximum train runs in a month | **206** trains

Maximum Double Stack train runs in a month | **166** trains (80% of the trains run in July)



## Improving vessel turnaround time by 69%, achieving over 200 PMPH

With every vessel operation, we focus on continually improving outcomes and experience for customers. On MOL Endowment, we were able to complete the vessel handling with 880 moves, and cross various performance milestones.



**ACHIEVED:**  
**215.51**  
Port Moves  
Per Hour

**SAVED:**  
**23 mins**  
Vessel Idle Time

**9.09**  
Port Hours

## Strengthening footprint in North India with Ludhiana office

APM Terminals Pipavav announced opening of a new office in Punjab. Ludhiana would cover large base of Inland Container Depots and cater to the wide geographies of Punjab, Haryana, Himachal Pradesh, and Jammu & Kashmir. Cargo owners from northern hinterland will now have easy access to the port for import/export of cargoes to and from East Asia, Europe and Americas. The office would facilitate local companies to have access to global markets, thus enhancing exposure to a wider audience.



continually  
achieved for  
**199**  
days

**SAFETY COUNTS**  
as on 30 Nov '23

[SAFETY POLICY](#) ▶

## CUSTOMER ADVISORIES

**Tariff structure  
revision effective-  
1<sup>st</sup> January 2024**

Know more ...

**B/L wise rail out  
effective from  
1<sup>st</sup> January 2024**

Know more ...

**Safety Lock  
installation on  
Container Trailers**

Know more ...

We will be happy to receive your feedback and suggestions about this Newsletter or our services. You can send an email to [nurjaha.arora@apmterminals.com](mailto:nurjaha.arora@apmterminals.com)

To know our value-offerings and how we support trade, [click here](#)